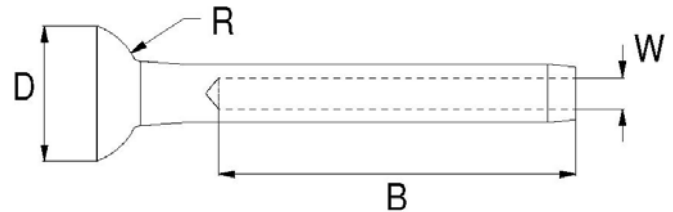




Stainless Steel Stemball Terminals

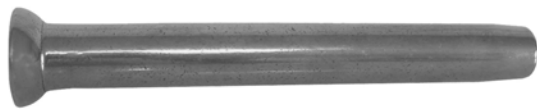
Imperial Wire Sizes

Part #	Wire Size	D	B	W	R	List Price
SB18	1/8"	.500	1.535	.134	.250	\$7.78
SB532	5/32"	.687	1.771	.173	.346	\$8.59
SB316	3/16"	.687	2.047	.212	.346	\$12.84
SB14	1/4"	.850	2.519	.256	.425	\$18.12
SB932	9/32"	.850	2.755	.295	.425	\$21.43
SB516	5/16"	1.082	3.150	.335	.543	\$29.97
SB38	3/8"	1.240	3.937	.417	.625	\$54.25
SB12	1/2"	1.397	5.196	.504	.700	\$86.29



Metric Wire Sizes

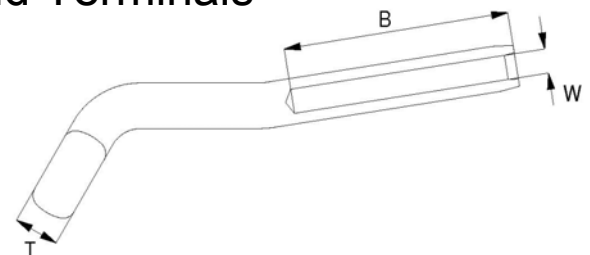
Part #	Wire Size	D	B	W	R	List Price
SBM03	3mm	12.6mm	39mm	3.4mm	6.3mm	\$7.78
SBM04	4mm	17.5mm	45mm	4.4mm	8.8mm	\$8.59
SBM05	5mm	17.5mm	52mm	5.4mm	8.8mm	\$12.84
SBM06	6mm	21.5mm	64mm	6.5mm	10.8mm	\$18.12
SBM07	7mm	21.5mm	70mm	7.5mm	10.8mm	\$21.43
SBM08	8mm	27.5mm	80mm	8.5mm	13.8mm	\$29.97
SBM10	10mm	31.5mm	100mm	10.6mm	15.8mm	\$54.25
SBM12	12mm	35.5mm	132mm	12.8mm	17.8mm	\$86.29



Stainless Steel Shroud Terminals

Imperial Wire Sizes

Part #	Wire Size	T	B	W	List Price
SH18	1/8"	.256	1.535	.134	\$15.57
SH532	5/32"	.312	1.771	.173	\$16.91
SH316	3/16"	.375	2.047	.212	\$19.34
SH14	1/4"	.492	2.519	.256	\$21.00
SH932	9/32"	.563	2.755	.295	\$32.45
SH516	5/16"	.630	3.150	.335	\$41.72
SH38	3/8"	.700	3.937	.417	\$58.43
SH12	1/2"	.949	5.196	.504	\$88.64



Metric Wire Sizes

Part #	Wire Size	T	B	W	List Price
SHM03	3mm	6.5mm	39mm	3.4mm	\$15.57
SHM04	4mm	7.9mm	45mm	4.4mm	\$16.91
SHM05	5mm	9.5mm	52mm	5.4mm	\$19.34
SHM06	6mm	12.5mm	64mm	6.5mm	\$21.00
SHM07	7mm	14.3mm	70mm	7.5mm	\$32.45
SHM08	8mm	16.0mm	80mm	8.5mm	\$41.72
SHM10	10mm	17.8mm	100mm	10.6mm	\$58.43
SHM12	12mm	24.1mm	132mm	12.8mm	\$88.64



Hayn Enterprises, LLC

51 Inwood Road – Rocky Hill, CT 06067
 1-800-346-4296 • Fax 800-441-4296
www.hayn.com • marine@hayn.com